

coloring

Ultaire AKP™

16.03.2018

Ultraire AKP™



coloring:



material:



Adhesive:
3M Espe Scotchbond™ Universal

Color:
GC OPTIGLAZE color

preparation:



Sandblaster the outside sureface of clasp with **50 μ m aluminium oxide** and **2 bar pressure**.

Cleaning by spraying with water.

Drying under **water-free and oil-free air**.



Applikation of the Adhesive (Scotchbond™ Universal-3M Espe). Use the disposable applicator to coat comprehensive on the surface and **rub it in** for **20 sec..**

Drying under **water-free and oil-free air**.

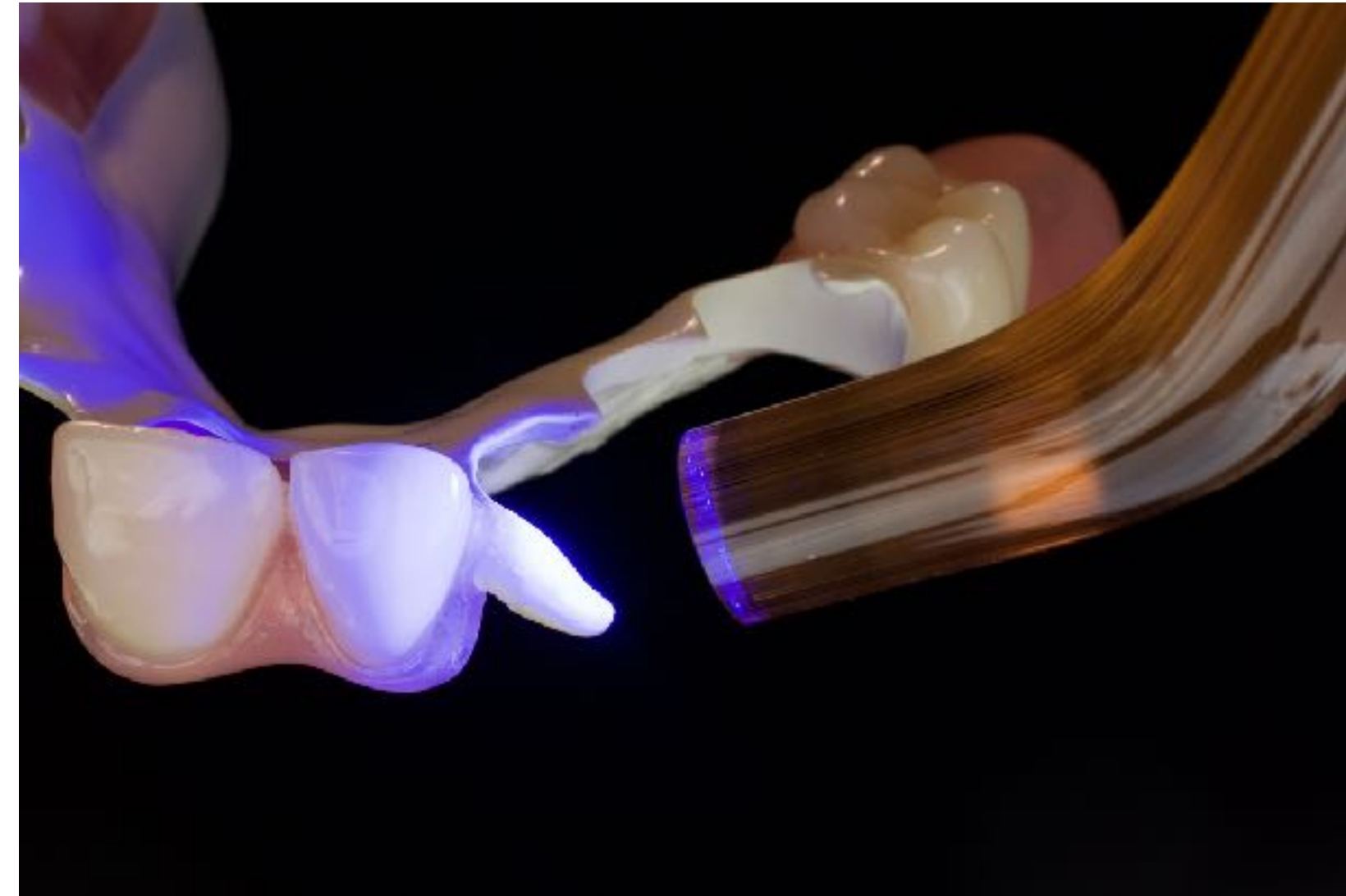


Harden the adhesive with a commonly used curing light for **20 sec.**

coloring:



Apply a very thin layer of **OPTIGLAZE color clear HV (GC)** at the outside surface of the clasp.



Harden the **OPTIGLAZE color clear HV** with a commonly used curing light for **20 sec.**

coloring:



Mix the base-color by using **OPTIGLAZE Clear HV and Color.**

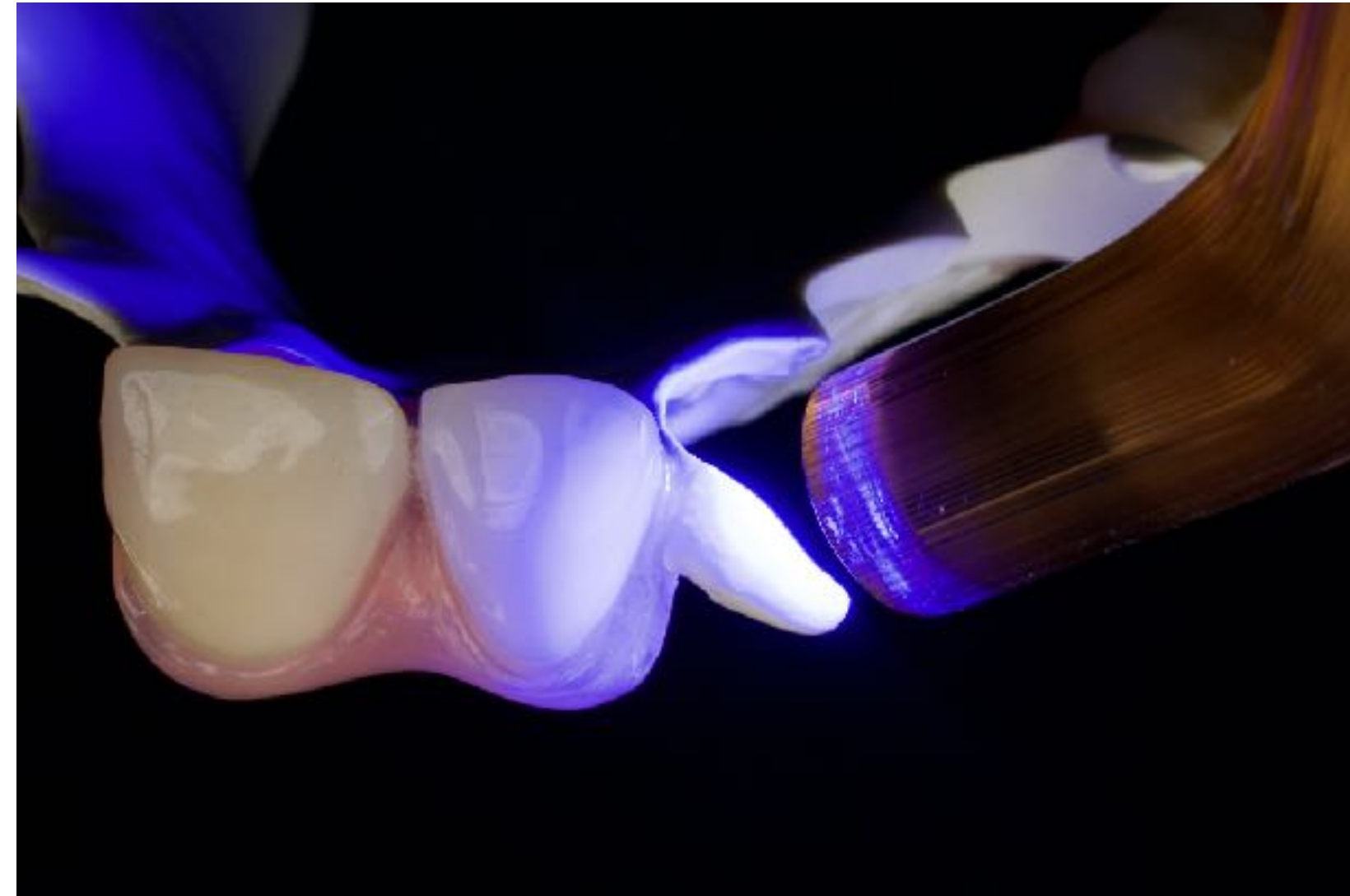
Be careful by applying the colours to the Clear. The colours are very intense and the result can fast get to **opaque.**

In this case for a A 2 we used: 3 drop Clear, one Drop B plus, a little of ivory white, very little of yellow and pink orange.

coloring:



Apply a thin layer of the **OPTIGLAZE mixed color** at the outside surface of the clasp.



Harden the **OPTIGLAZE mixed color** with a commonly used curing light for **40 sec.**

This Steps could be done two times to achieve the right colouring.

coloring:



Mix the color for by using **OPTIGLAZE clear or Clear HV and Color.**

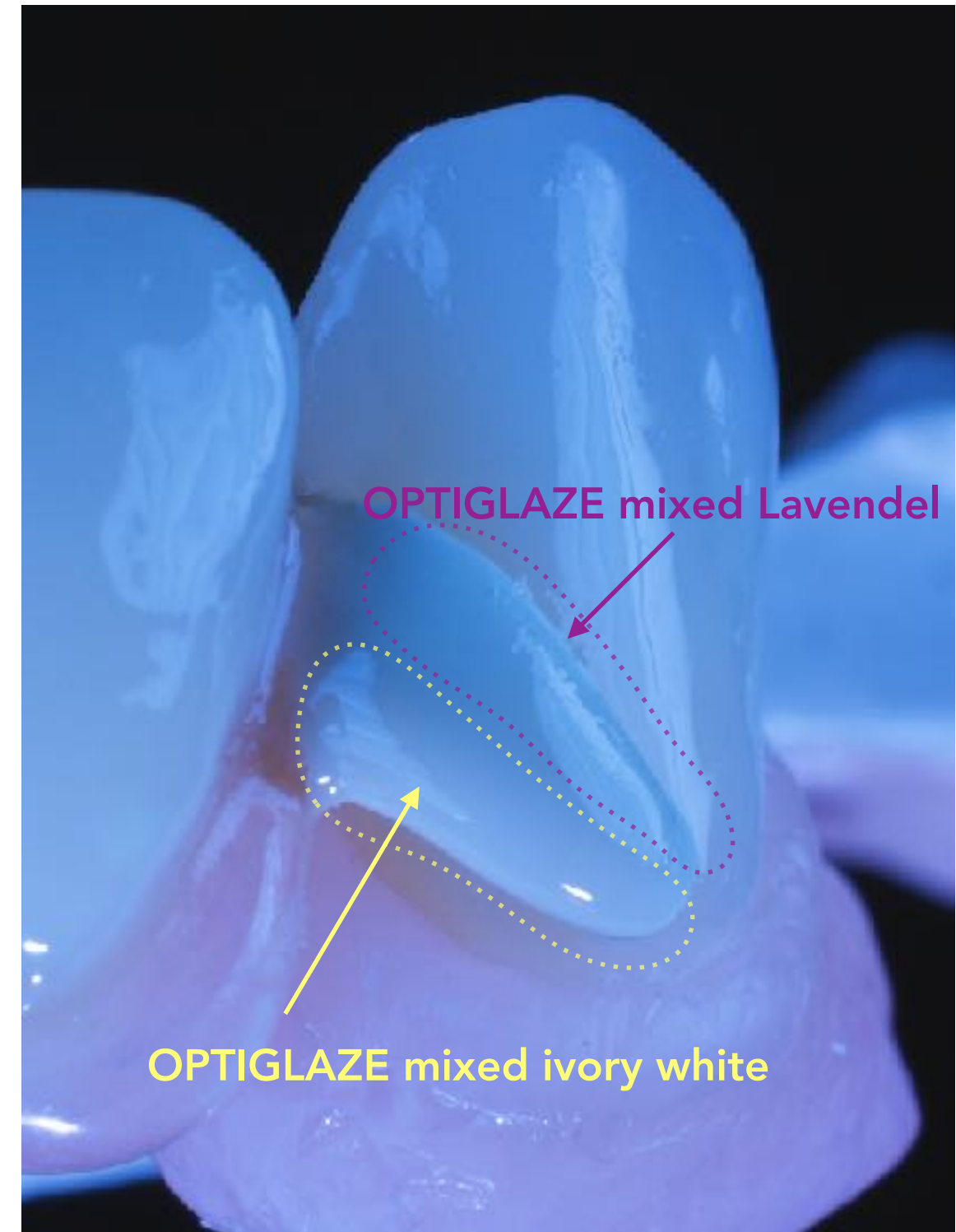
Be careful by applying the colour to the Clear. The colours are very intense and the result can fast get to opaque.

In this case for a A 2 we used:
1 drop Clear or clear HV for each, a little of ivory white and Lavendel.

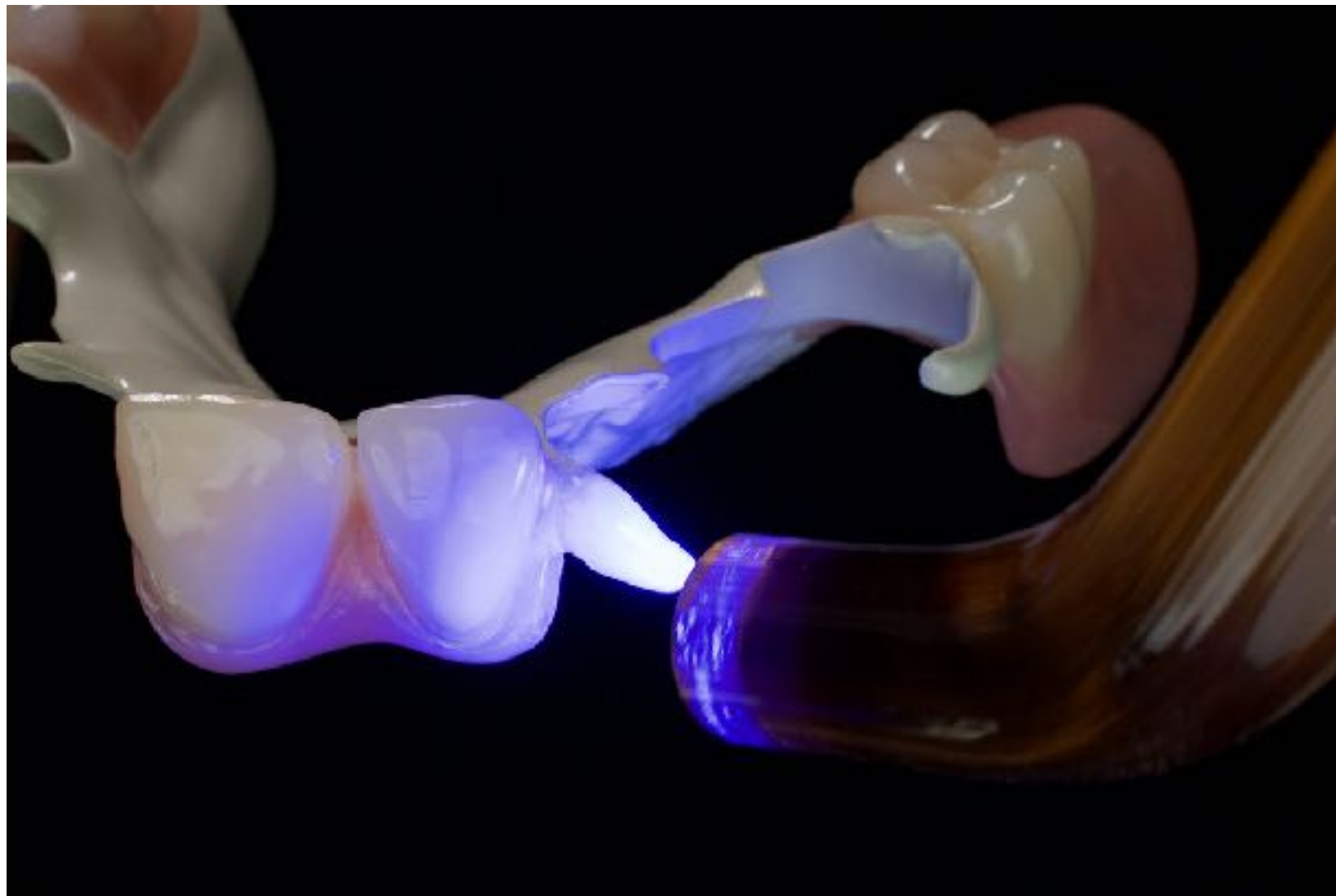
coloring:



Apply a thin layer of the **OPTIGLAZE mixed Lavendel** on the occlusal area of the clasp and some thin layer of the **OPTIGLAZE mixed ivory white** to light up the base-color.



coloring:



Harden the **OPTIGLAZE mixed color** with a commonly used curing light for **40 sec.**

Applicate a thin layer of **OPTIGLAZE color clear** over the coloured part and harden it with a commonly used curing light for **40 sec.**



Polnisch the clasp with Goat-Brushes + microfibre and cotton-brush with polishing paste.

coloring:



coloring:



befor



after

coloring:

Ultaire AKP™

